

PRODUCTION

- ▶ Tubes (Alumina/Zirconia/SiC/SiN) 1, 2, 4
- ▶ Multilayer porous alumina tube 1, 2
- ▶ Ceramic chamber 1
- ▶ Heat exchanger 1, 2
- ▶ Hermetic seal 2, 5
- ▶ Heat insulator 1, 2, 6
- ▶ Alumina window 1, 2, 4, 5, 7, 8
- ▶ Alumina parts for SOEC 1, 2

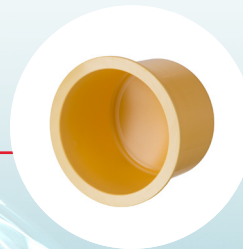
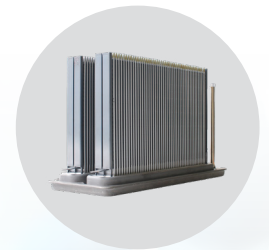
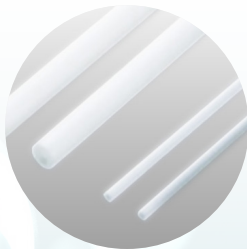


USAGE

- ▶ Ceramic hermetic terminals 2, 5
- ▶ Sapphire window 3, 7
- ▶ Sintering jig 1
- ▶ Plunger/Cylinder 1, 3
- ▶ Ball valve 1, 2, 3
- ▶ Solid Oxide Fuel Cell (SOFC) 2, 9
- ▶ Silicon Nitride Igniter 1, 5, 9

TRANSPORT/STORAGE

- ▶ Sapphire tube 3, 7, 8
- ▶ Containment shell 1, 2, 3, 9
- ▶ High pressure plunger 1, 2, 3
- ▶ Feedthrough for LH₂ 1, 2, 5
- ▶ Magnetic material 2



- 1 Heat resistance
- 2 Hydrogen resistance
- 3 High pressure resistance
- 4 Plasma resistance
- 5 Electrical insulation
- 6 Thermal conductivity
- 7 Transparency
- 8 Low dielectric loss
- 9 Energy efficient